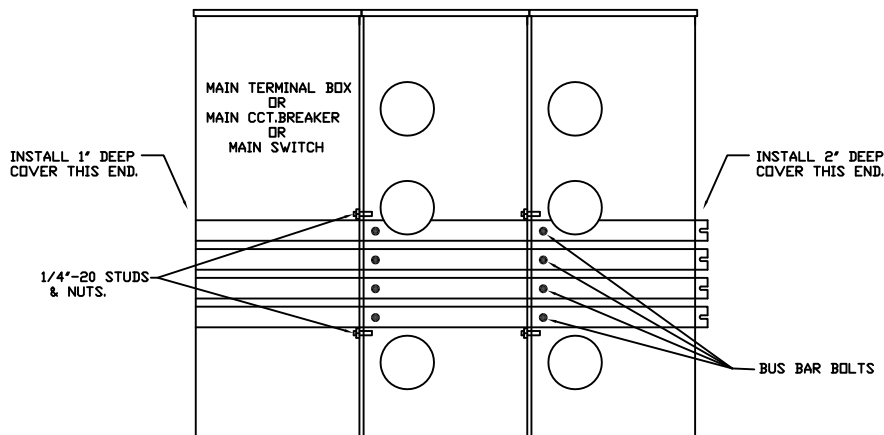


NOTE:- ENCLOSURES ARE TYPE 3R, FOR OUTDOOR OR INDOOR USE.
APPLICATION:- 208Y/120V.A.C., 240/120V. 3PH 4W., OR 1PH. 3W.
480/277V.A.C., 3PH 4W (TYPE 6CM)

METER STACK INSTALLATION INSTRUCTIONS

1. INSTALL HANGER RAILS ON WALLS. ESTABLISH HEIGHT OF TOP, AND/OR BOTTOM METER PER UTILITY COMPANY REQUIREMENTS. ATTACHED DRAWING WILL PROVIDE DIMENSIONAL INFORMATION. STRIKE A LEVEL LINE FOR FASTENERS FOR WALL HANGERS.
2. A PACKAGE CONTAINING (4) 1/4"-20 X 1 1/4" STUDS, TOGETHER WITH LOCKWASHERS AND NUTS IS PACKED INSIDE OF EACH UNIT. INSTALL STUDS IN THREADED INSERTS IN LEFT SIDE OF EACH CABINET. DO NOT OVERTIGHTEN.
3. HANG UNITS ON THE HANGER RAILS, LOOSEN ALL BUS BAR BOLTS, AND SLIDE UNITS TOGETHER. INSTALL LOCKWASHERS AND NUTS ON THE STUDS WHICH WERE PREVIOUSLY INSTALLED. TIGHTEN NUTS TO 60 POUND/INCHES (5 POUND/FEET).
4. TIGHTEN BUS BAR BOLTS TO 25 POUND/FEET. (300 LB./IN.)
5. FASTEN PANELBOARD TO WALL.
6. END CAPS ARE FURNISHED WITH THE MAIN TERMINAL BOX, OR MAIN DISCONNECT BOX. THE 1" DEEP CAP IS TO BE INSTALLED ON THE LEFT SIDE OF THE LEFT-HAND UNIT. THE 2" DEEP CAP IS TO BE INSTALLED ON THE RIGHT END OF THE RIGHT-HAND UNIT.



TYPICAL ASSEMBLY.

MAIN UNIT MAY BE INSTALLED AT EITHER END OF, OR BETWEEN METER PANELS UNITS.

* INSTALL STUDS IN THE THREADED INSERTS IN LEFT SIDE OF CABINET, BEFORE MOVING UNITS TOGETHER. THIS WILL MAKE ASSEMBLY EASIER.

240V COMMERCIAL METERING PANELBOARD

DWN. K.K.T	 ELECTRICAL EQUIPMENT COMPANY ELK GROVE VILLAGE, ILLINOIS. (708)-640-7701 MANUFACTURERS	DRAWING NUMBER CMPNL4 10/8/97DN 11/24/03KT
DATE: 4/15/92		
SCALE: NONE		